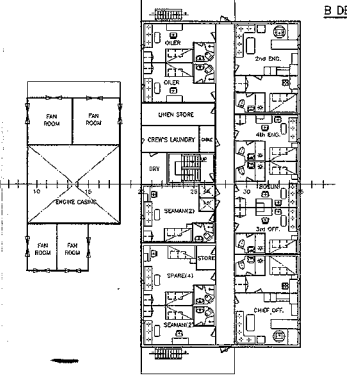
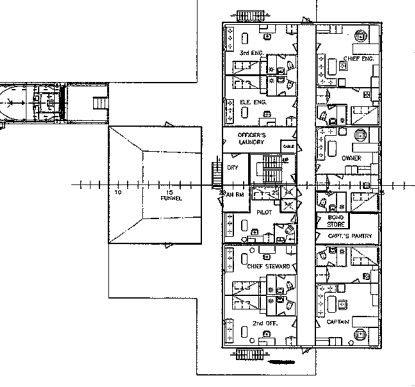


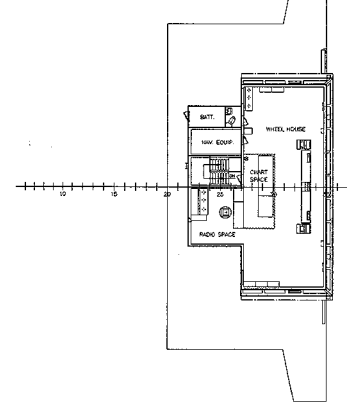
A DECK



B DECK



C DECK



BRIDGE DECK

PRINCIPAL PARTICULARS

LENGTH O.A.	189.99 m
LENGTH B.P.	185.00 m
BREADTH MLD	32.26 m
DEPTH MLD	18.00 m
DESIGN DRAFT	11.30 m
SCANTLING DRAFT	12.95 m
DEADWEIGHT (AT SCANTLING DRAFT)	o/a. 58,000 t
MAIN ENGINE TYPE	MAN-B&W 6S50MC-C 1set
M.C.R.	9480kW x 127 r/min
SERVICE SPEED (AT DESIGN DRAFT)	o/a. 14.30 kn
COMPLEMENT	30 Persons
CLASS	BV 1 + CSR Bulk carrier ESP EC-A, Holds 2, 4 may be empty, unrestricted navigation, VeriSTAR-HULL, INWATERSURVEY
	+ AUT-UMS, MGN-SHAFT

CROWN SS		PRIMARY
58000 DWT BULK CARRIER		SDA-BC58KA-07-2-02
GENERAL ARRANGMENT		比例 1:200
Ver. A		日期 2009.05.12

16/3 102
16/3-08