

FINISHED PLAN

NE193

PORT BELAVISTA

GENERAL ARRANGEMENT

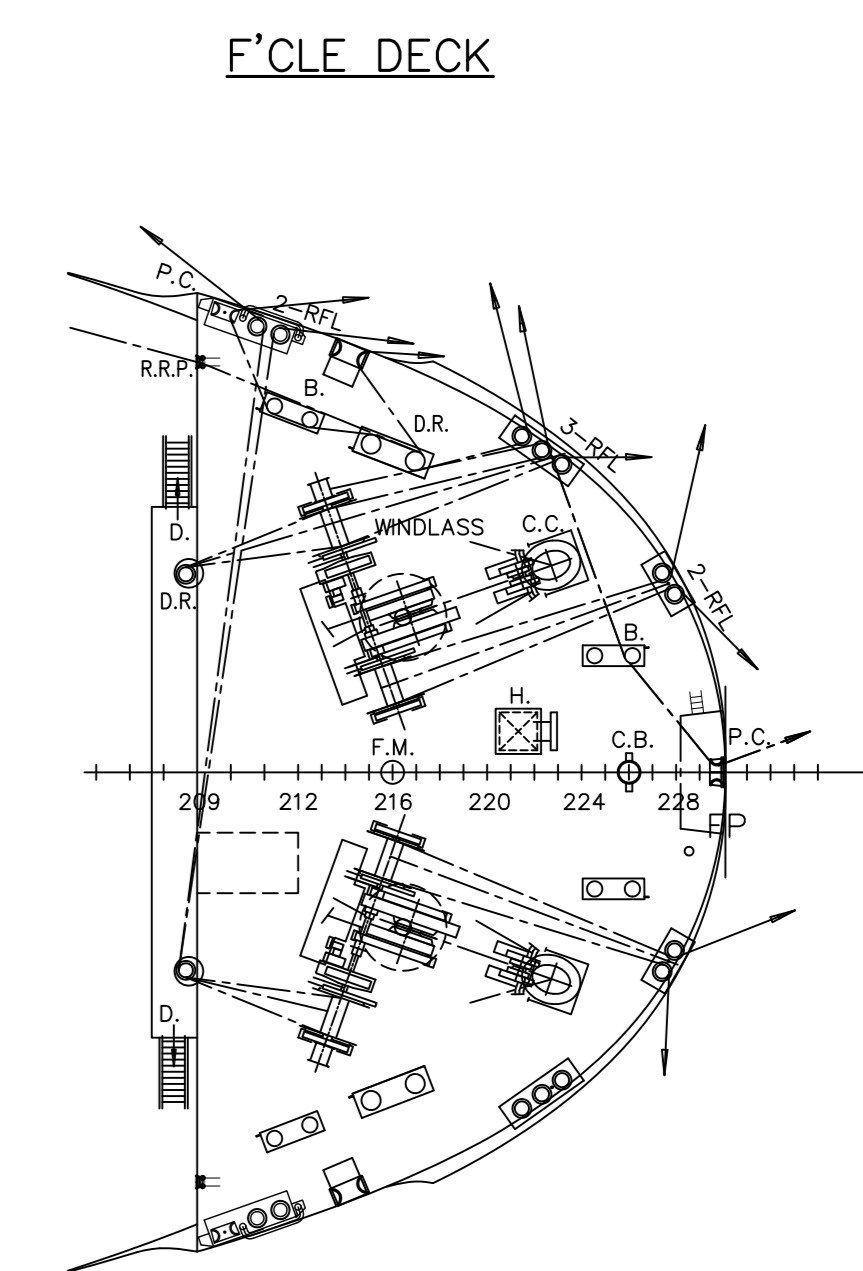
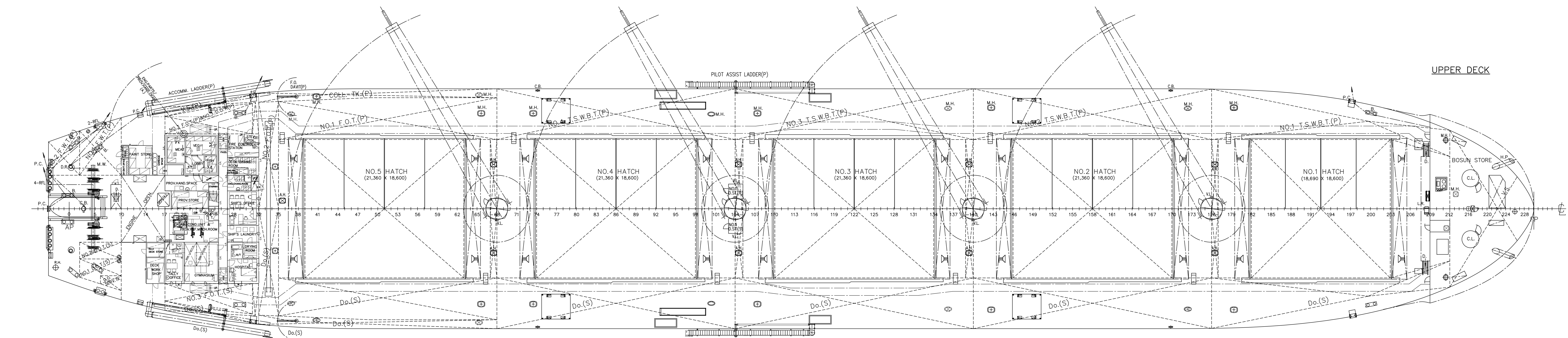
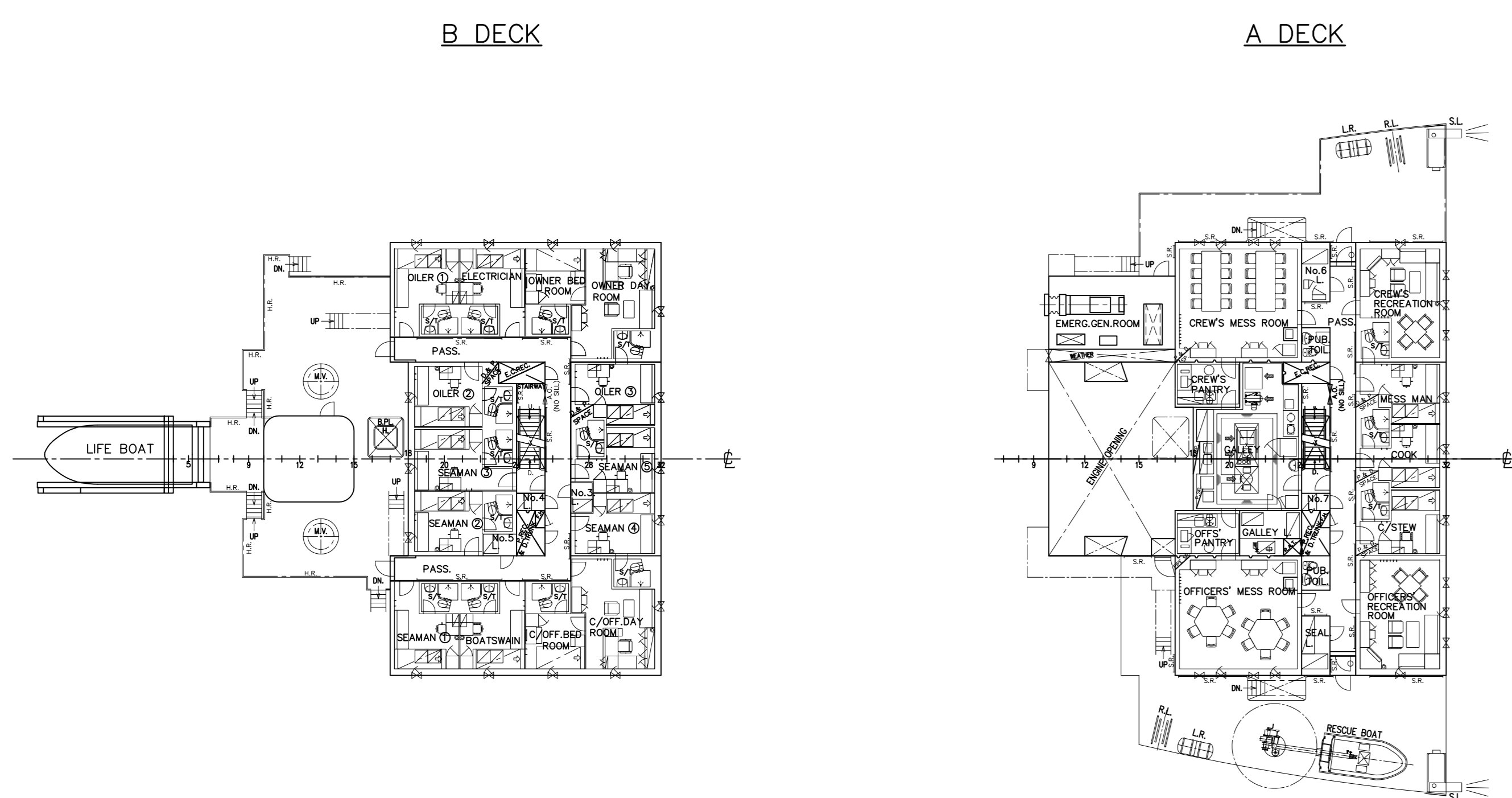
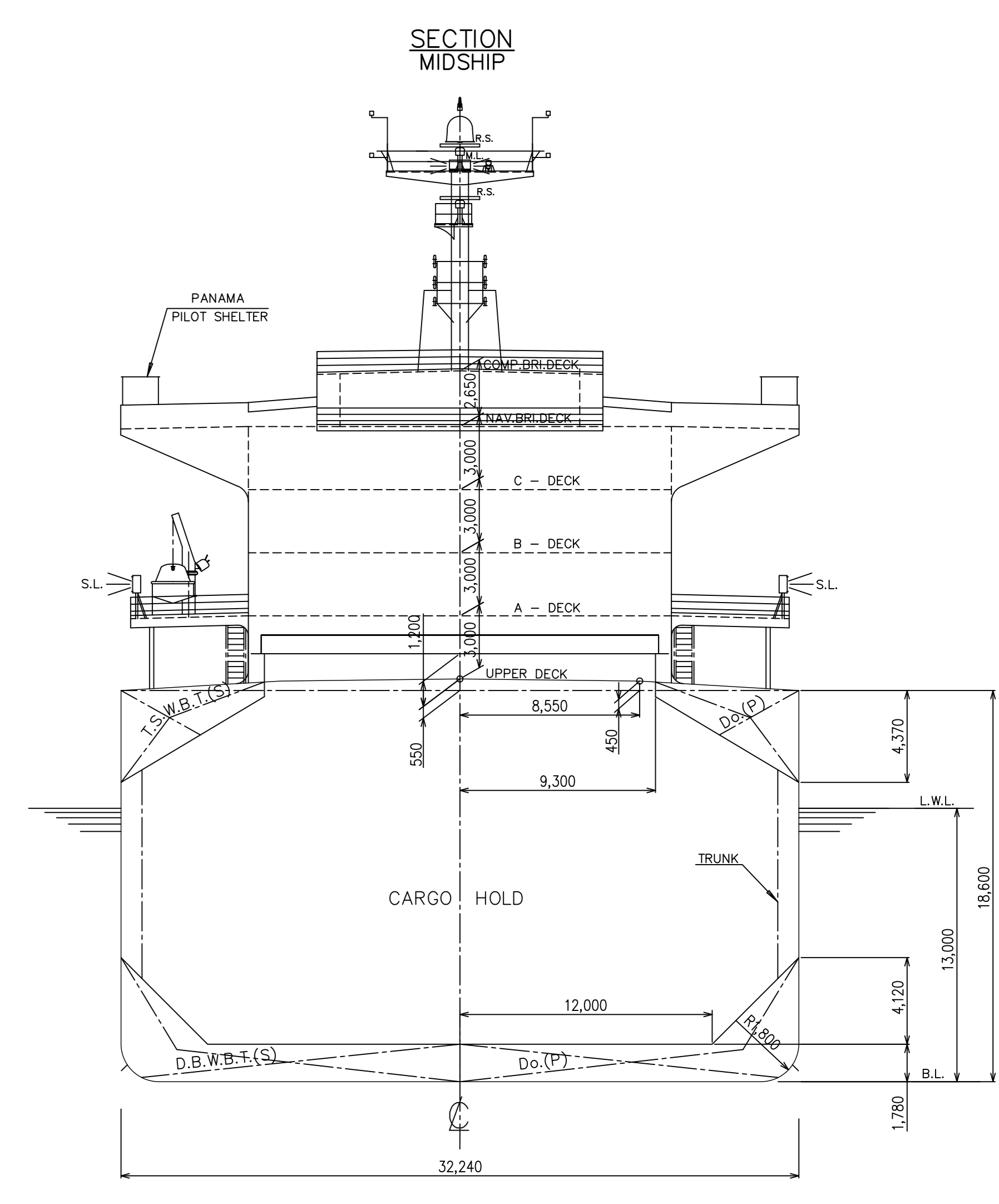
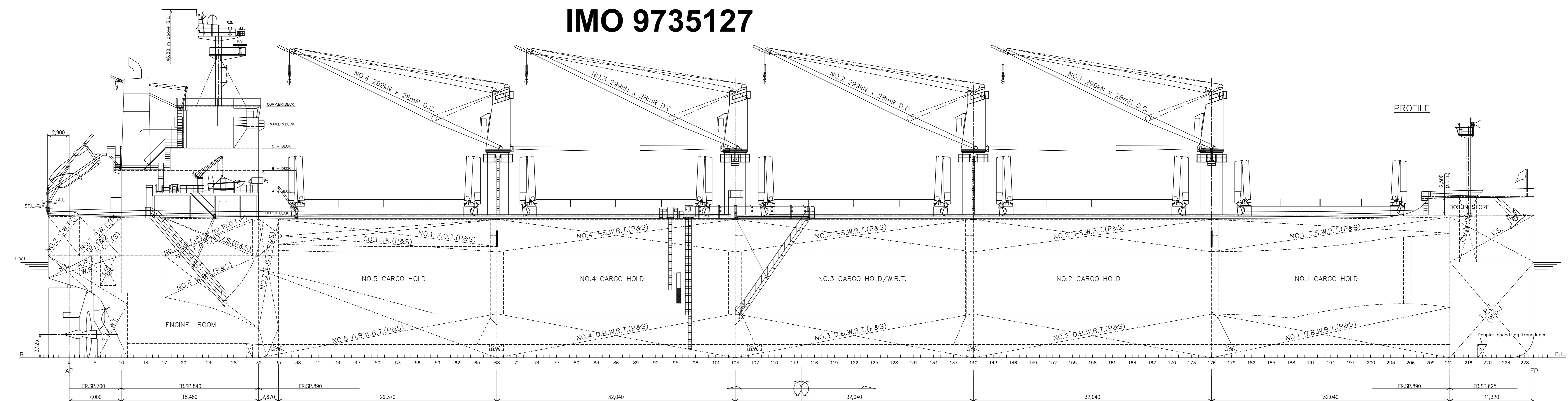
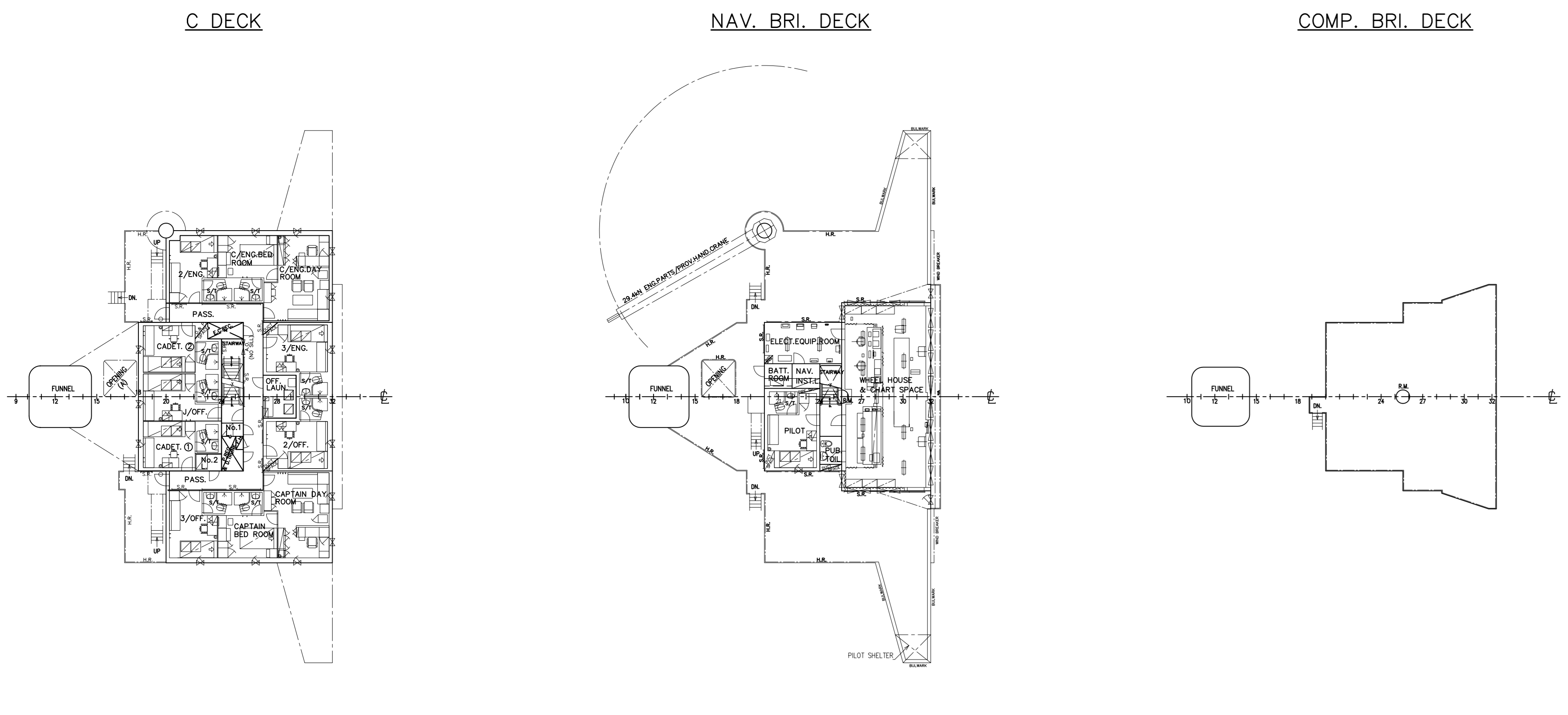
This technical document is the property of Nantong COSCO KHI Ship Engineering Co., Ltd. (NACKS), and may not be copied, nor disclosed to any third party without NACKS's prior written consent.

DWG. NO. H-3	MANAGER <u>Xue Guoliang</u>	SCALE: _____	JOB NO. : _____
	CHIEF <u>Shi Chao</u>	DETAIL DESIGNING DEPARTMENT TECHNICAL DIVISION NANTONG COSCO KHI SHIP ENGINEERING CO., LTD. NANTONG CHINA	
CHECKED <u>Zhou Xu</u>			
DRAWN <u>CYG / Wang Nan</u>			
	DATE _____		

GENERAL ARRANGEMENT

M.V. PORT BELAVISTA

IMO 9735127



PRINCIPAL DIMENSIONS

L.S.A.	64.199.0m
L.P.P.	57.00m
B.M.B.	32.24m
D.M.L.	18.60m
4.M.D. (DECK)	11.30m
4.M.D. (SWAMP)	13.00m

CLASSIFICATION

ABS: +A1(E), Bulk Carrier, BC-A (holds , 2 and 4 may be empty), +AMS, +ACCU, CSR, AB-DM, CPS, GRAB(20), ESP, UMLD, TCM, PMA, BWT, CRC and RW

MAIN ENGINE

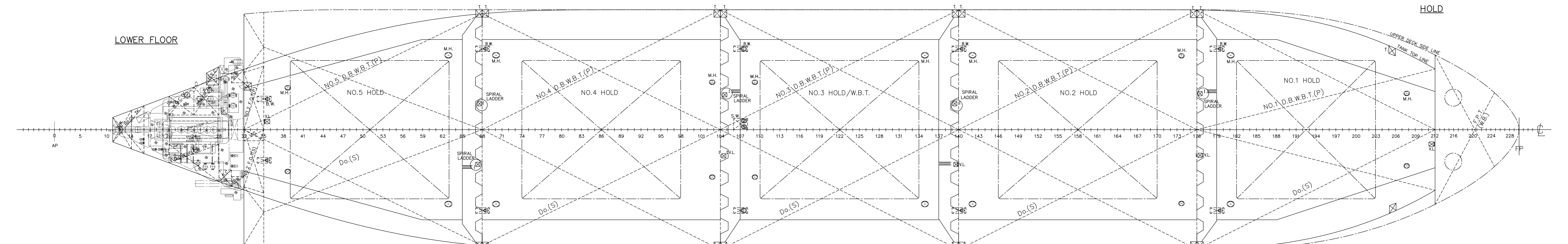
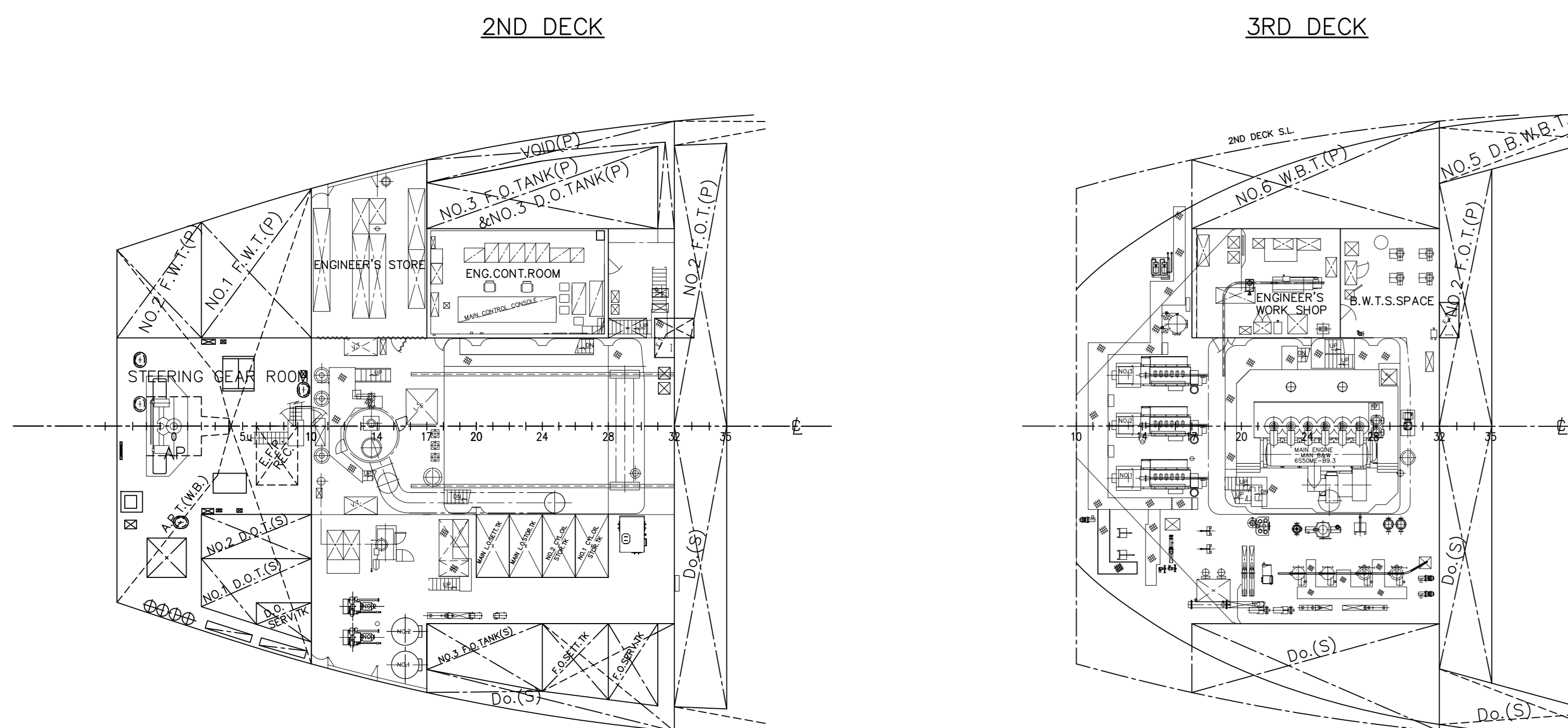
1SET OF MAN-B&W 6S9ME-89.3-70
M.C.O. 8,130 kW(84P) x 108rpm
NOR.(89.3 M.C.O.) 6,910 kW(84P) x 107rpm

SPEED

ABT. 14.5 KNOTS (d=11.30m)

FLAG

PANAMA



COMPLEMENT

DEPARTMENT	DECK	ENGINE	PURSER	SUM
OFFICER	HIGHEST OFFICER	CAPTAIN 1	CHIEF ENGINEER 1	2
	SENIOR OFFICER	CHIEF OFFICER 1	OWNER 1	2
	JUNIOR OFFICER	2ND OFFICER 1	2ND ENGINEER 1	4
		3RD OFFICER 1	3RD ENGINEER 1	
TOTAL	(4)	(4)	(0)	(8)
RATINGS	BOAT-SWAIN	ELECTRICIAN	CHIEF STEWARD	3
	SEAMAN 5	OLER 3	COOK 1	10
			MESS MEN 1	
TOTAL	(6)	(4)	(3)	(13)
CREW TOTAL		10	8	21
OTHERS		PILOT (JUNIOR OFFICER CLASS)		1
		JUNIOR OFFICER		1
		CADET (RATING CLASS)		2
PERSONS ON BOARD, GRAND TOTAL				24
SUEZ CANAL BOATMEN (NOT INCLUDED IN COMPLEMENT)				(6)